

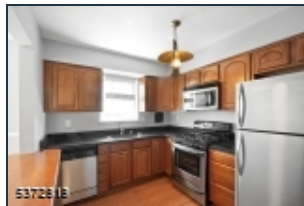
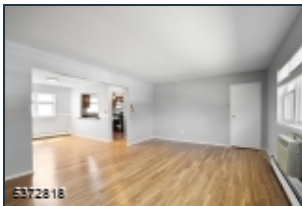
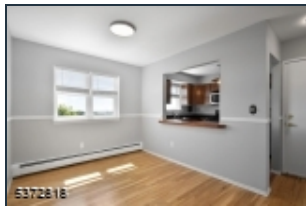
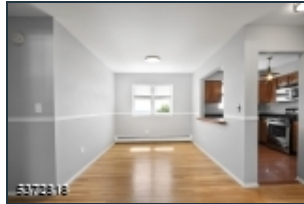


2467 State Route 10*

Parsippany-Troy Hills Twp.*
(2330)

\$299,000

MLS#: 3976410
 # Rooms: 6
 # Bedrooms: 2
 # FullBaths: 1
 # HalfBaths: 0
 Lot Size: 0
 Acres: *
 Tax Year: 2024
 Taxes: \$5,297
 Year Built: 1960



Style: One Floor Unit

Garage: 0 /

Basement: No /

Heat: 1 Unit

Cool: Wall A/C Unit(s)

Fireplace: 0 /

Directions: Rt.10 W to Powdermill Rd u-turn onto Rt 10 E to Mountain Club.

Welcome home to your move in ready beautifully updated 2-bedroom, 1 bath second floor condo in the desirable, affordable, and sought after Mountain Club. Bathed in natural light, this inviting home offers a perfect blend of modern upgrades and beautiful views. The BRAND NEW bathroom is a standout, boasting stylish tile work with a stunning custom inlay that adds a beautiful & practical touch! Freshly painted throughout in a neutral color & featuring newly refinished floors, the space feels crisp, clean, and welcoming. The updated kitchen is equipped with sleek stainless steel appliances & opens to the dining area through a convenient pass-through ideal for both everyday living and entertaining. Enjoy sweeping, elevated green views with the added bonus of a distant view of the New York City skyline an inspiring backdrop! Unit comes with a storage locker. The monthly HOA fee includes gas, water, sewer, heat, & trash pick-up! The Mountain Club's amenities include a clubhouse, swimming pool, gym, sauna & tennis courts. Easy access to major highways, transit, restaurants and of course Parsippany's excellent schools! Property is located in Parsippany w/ a Morris Plains NJ mailing address. Assigned Parking spot # 665. Optional association garage rental for \$50 per month.



EQUAL HOUSING
OPPORTUNITY