



2467 State Route 10*

Parsippany-Troy Hills Twp.*
(2330)

\$295,000

MLS#: 3961682
 # Rooms: 5
 # Bedrooms: 2
 # FullBaths: 1
 # HalfBaths: 0
 Lot Size: 0
 Acres: *
 Tax Year: 2024
 Taxes: \$5,124
 Year Built: 1960

Style: First Floor Unit, One Floor Unit

Garage: 0 /

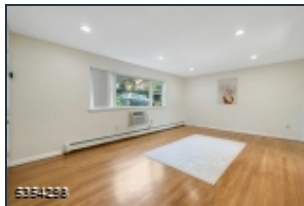
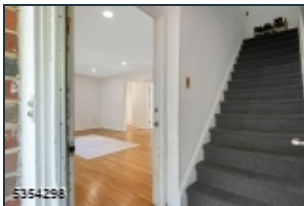
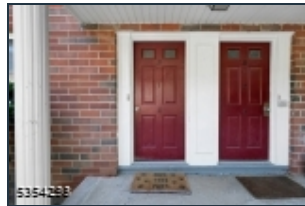
Basement: Yes / Unfinished

Heat: 1 Unit, Baseboard - Hotwater

Cool: 3 Units, Wall A/C Unit(s)

Fireplace: 0 /

Directions: Route 10 to mountain club. follow signs for building 24
 Park in visitors slots. Assigned
 Parking # 16



Great Opportunity to own a beautifully updated, 1st floor, corner unit, 2-bedroom plus den/3rd bedroom/office with closet, in Morris County's most affordable complex. This must-see condo features a kitchen with tiled backsplash. This unit has hardwood floors through-out except kitchen which has laminate wood. Being the corner unit, extra window in each bedroom flooding the entire unit with natural light. Coin Operated Laundry and extra storage are conveniently located in the basement. Close to NY-direct train station and a short drive to downtown Morristown with great shops, restaurants and entertainment venues The Mountain Club offers great amenities: clubhouse, exercise room, swimming pool, sauna and tennis courts. HOA fee includes gas heat, water, sewer and trash pick-up. You pay only for electric and cable/internet.. Property is located in Parsippany-Troy Hills Township with a Morris Plains NJ mailing address. Assigned Parking spot # 16 Optional garage rental is available at \$50 per month through the HOA. Check with HOA regarding pet policy.and rentals.



EQUAL HOUSING
OPPORTUNITY