



5352367

131 Kitchell Rd*

Morris Twp.* (2324)

\$975,000

MLS#: 3958062
Rooms: 9
Bedrooms: 3
FullBaths: 3
HalfBaths: 0
Lot Size: 0.55 AC*
Acres: 0.55*
Tax Year: 2024
Taxes: \$14,092
Year Built: 1897



5352367



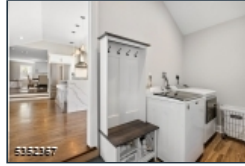
5352367



5352367



5352367



5352367



5352367

Style: Expanded Ranch**Garage:** 2 / Attached Garage, Garage Door Opener**Basement:** Yes / Partial**Heat:** Forced Hot Air**Cool:** Central Air**Fireplace:** 1 / Dining Room**Directions:** Off Spring Valley Rd and Woodland Ave

Set on over half an acre among prestigious estates in one of Morris Township's most sought-after neighborhoods, this beautifully renovated home offers an exceptional blend of charm, luxury, and convenience. Just minutes from the NYC train and vibrant downtown Morristown, and steps from the scenic trails of Loantaka Brook Park, this home places lifestyle at the forefront. Thoughtfully designed with 3 spacious bedrooms and 3 full baths, the home also features a dedicated home office area, a versatile den, a large combination living and family room, and striking architectural details throughout. Vaulted ceilings and skylights fill the space with natural light, while the impressive waterfall kitchen island, premium Italian stainless steel appliances, and custom crown molding showcase quality craftsmanship. Gleaming hardwood floors run throughout the main living areas, complemented by designer bathrooms and upscale finishes. Outdoor living is enhanced with multiple entertaining spaces, including a spacious deck, two patio areas, and a large fully fenced backyard. Modern conveniences include an attached 2-car garage with a Level 2 Tesla EV charger, along with smart home features such as a Ring security system and Nest thermostats, offering comfort, efficiency, and peace of mind. This is a rare opportunity to own a turnkey home in a premier location.



EQUAL HOUSING
OPPORTUNITY