



5331746

## 2467 State Route 10

Parsippany-Troy Hills Twp.\*  
(2330)

**\$230,000**

**MLS#:** 3942448  
**# Rooms:** 4  
**# Bedrooms:** 1  
**# FullBaths:** 1  
**# HalfBaths:** 0  
**Lot Size:** 9999  
**Acres:** 0.00  
**Tax Year:** 2024  
**Taxes:** \$3,821  
**Year Built:** 1960

**Style:** One Floor Unit

**Garage:** 0 / None

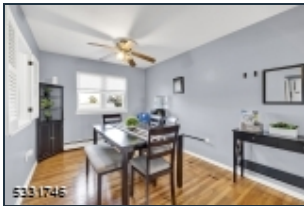
**Basement:** No /

**Heat:** Baseboard - Hotwater

**Cool:** Wall A/C Unit(s)

**Fireplace:** 0 /

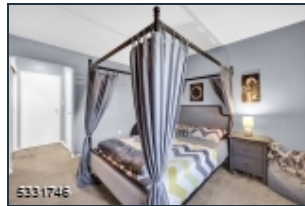
**Directions:** Route 10 East to The Mountain Club Condominium, Building #7 Unit 7B, Second Floor.



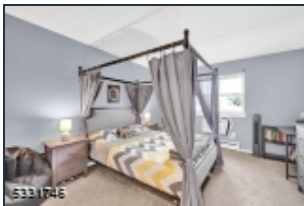
5331746



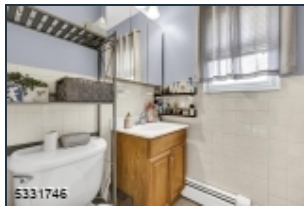
5331746



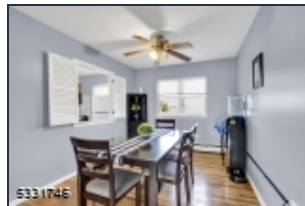
5331746



5331746



5331746



5331746

Discover the practical charm of this one bedroom condo located in the desirable Mountain Club Condominium community of Parsippany, New Jersey. Ideal for those who need straightforward, no-fuss living close to commuting routes, this condo offers a simple yet comfortable layout. The bedroom is spacious, providing a restful retreat with adequate room for storage. Recent updates to the bathroom include modern fixtures that enhance everyday functionality. The living areas are well-proportioned, making smart use of space for both relaxation and casual entertaining. Additional storage options throughout the condo help keep your space organized and clutter-free. With its convenient location, this property stands out as an excellent choice for commuters looking for a blend of comfort and practicality. Club House with lounge, gym, pool and two onsite tennis courts. Laundry and additional storage in the basement. Assigned parking spot. Garages are available to rent for a monthly fee.



EQUAL HOUSING  
OPPORTUNITY