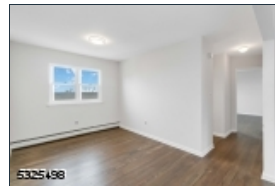
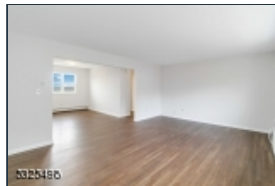
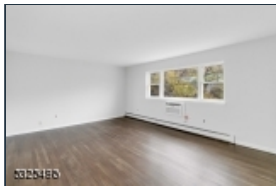
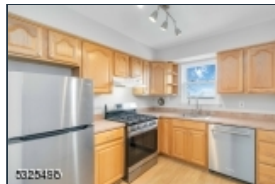
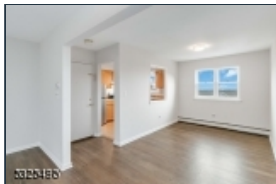




2467 State Route 10*
Parsippany-Troy Hills Twp.*
(2330)

\$275,000

MLS#: 3935304
Rooms: 6
Bedrooms: 2
FullBaths: 1
HalfBaths: 0
Lot Size: 0.00
Acres: 0.00
Tax Year: 2024
Taxes: \$5,211
Year Built: 1961



Style: Colonial, One Floor Unit

Garage: 1 / Detached Garage, See Remarks

Basement: No /

Heat: 1 Unit, Baseboard - Hotwater

Cool: Wall A/C Unit(s)

Fireplace: 0 /

Directions: Use gps. Building 20 is located next to the Club Pool. Please park in space #461 behind building or visitor parking only.

Welcome to the Mountain Club in the desirable Morris Plains/Parsippany community. This spacious 2-bedroom condo offers the perfect blend of comfort and convenience with single-floor living. As you step inside, you'll be greeted by gleaming refinished hardwood floors throughout, and every room has been freshly repainted in neutral tones, providing a blank canvas to make it your own. The designated dining room offers views of the iconic New York City skyline, perfect for enjoying meals or relaxing with a drink. The kitchen and bathroom have been thoughtfully updated with modern appliances and fixtures, ensuring both style and functionality. The open and airy layout allows for easy living and entertaining, with ample space in both bedrooms and living areas. This vibrant community is packed with amenities, including a large, beautiful pool, a clubhouse featuring a pool table and fitness center, and tennis courts for outdoor enjoyment. HOA fees include heat, water, sewer, cooking gas, exterior maintenance, landscaping and snow removal. Commuters will appreciate the prime location near major highways and public transportation, making Parsippany/Morris Plains one of the most sought-after communities in Northern New Jersey. Don't miss the opportunity to own this charming home in a highly desirable area!



**EQUAL HOUSING
OPPORTUNITY**