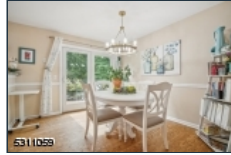




5311059



## 22 Cadence Ct\*

Morris Twp.\* (2324)

\$639,000

MLS#: 3923613  
# Rooms: 7  
# Bedrooms: 2  
# FullBaths: 2  
# HalfBaths: 1  
Lot Size: 0.033 AC\*  
Acres: 0.03\*  
Tax Year: 2023  
Taxes: \$8,543  
Year Built: 1994

Style: Multi Floor Unit, Townhouse-End Unit, Townhouse-Interior

Garage: 1 / Attached Garage

Basement: No /

Heat: 1 Unit, Forced Hot Air

Cool: 1 Unit, Central Air

Fireplace: 1 / Gas Fireplace, Living Room

Directions: Woodland to Pippens to right on Cadence to end

Beautiful Davenport Model features two bedroom, two full and one half bath located in a highly desirable area offers the perfect blend of modern living and comfort. The inviting entrance provides easy access to the one car garage, mud room and closet. The southern exposure ensures that the space is flooded with natural light throughout the day making the living room with a gas fireplace, kitchen and bedroom bright and inviting. Large windows frame picturesque views, providing a serene atmosphere in every season. The open concept layout seamlessly connects the living and family room ideal for both relaxing and entertaining. The newer eat in kitchen is fully equipped, sleek counter top, ample closet space with a new French door that leads to the deck, perfect to BBQ. The luxurious primary bedroom boasts a custom fitted closet, en-suite bathroom with a vanity, jetted tub and separate stall shower. The powder room and laundry room complete this level. Additionally, the upper floor provides a bedroom, full bath, office with skylight and large bonus room. Hardwood floors, carpeted bedrooms and neutral tones throughout this condo create a cohesive, stylish design. Amenities include pool, tennis, club house, jogging path, fitness center. Take advantage of what this community has to offer. Near-by Convent Station with direct train service to Hoboken & NY Penn Station, restaurants & parks.



EQUAL HOUSING OPPORTUNITY