



5285664

10 Chadwell Pl*

Morris Twp.* (2324)

\$799,000

MLS#: 3906943
Rooms: 8
Bedrooms: 2
FullBaths: 2
HalfBaths: 1
Lot Size: 0.045 AC*
Acres: 0.04*
Tax Year: 2023
Taxes: \$13,613
Year Built: 1993

Style: Townhouse-Interior

Garage: 1 / Attached Garage, Garage Door Opener, Inside Entrance

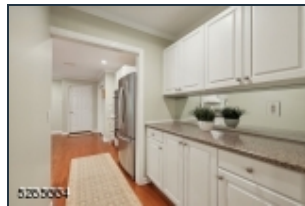
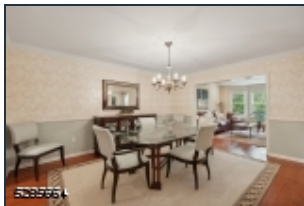
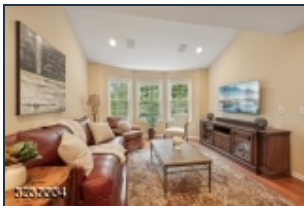
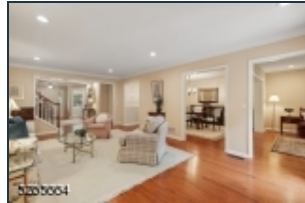
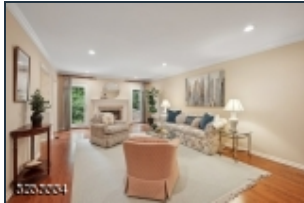
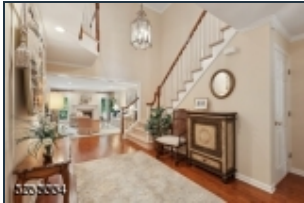
Basement: Yes / Full

Heat: 1 Unit, Forced Hot Air

Cool: 1 Unit, Central Air

Fireplace: 2 / Bedroom 1, Gas Fireplace, Living Room

Directions: Woodland Ave. to Steeple Chase Way to Pippins Way to Chadwell Place, or, Madison Ave. to Canfield Ave. to Pippins Way to Chadwell Place



Fabulous updated townhome in the amenity rich Moore Estate! This two bedroom with ensuite baths has a timeless brick front, which welcomes you into the elegant double story foyer with sweeping curved stair. Beyond, an expansive living room is hallmarked by a gas fireplace, oversized windows and French door to the patio. A nearby cozy family room offers a casual lounge and media space. The formal dining room is perfect for hosting holiday meals or intimate dinners with adjoining butler pantry, outfitted with mirror backsplash and granite topped cabinetry offering entertaining options and storage. The inviting and refreshed kitchen has white cabinets, granite counters and stainless steel appliances, separate dining area and a roomy pantry. A guest powder room completes the first level. The gracious staircase meanders to the second floor, where double doors open to the primary suite. Serene and private, this generously sized bedroom offers a quiet oasis with a sitting room behind French doors with a gas fireplace, which could also serve as an office. The renovated spa bath features a Toto air jetted tub with surround and separate glass shower. The additional bedroom with walk in closet is ensuite with a beautiful renovated bath. Outside, a patio with sunshade enjoys alfresco dining. Freshly painted basement awaits your personal touch. Within minutes of vibrant Madison, Morristown, train service to NYC and Newark Int'l airport, this home's location is exceptional!



EQUAL HOUSING
OPPORTUNITY