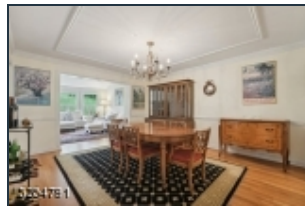
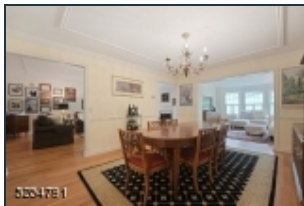
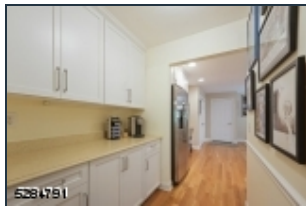
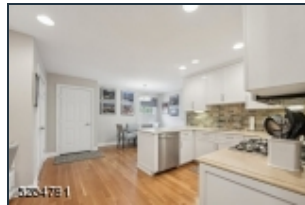
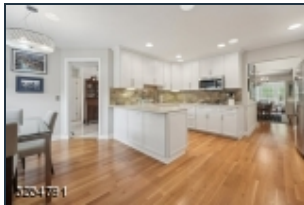
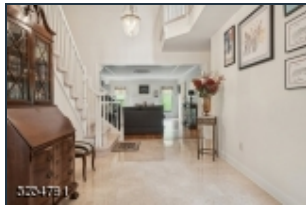




5284791



Welcome to this lovely Olcott model townhome in the sought after Moore Estate. Walking in you're greeted by a 2 story foyer and sweeping stair case. The beautifully updated kitchen offers a light drenched eat in space, ample cabinetry, and butler's pantry leading to the spacious dining room. The large living room has a gas fireplace and access to a private patio. Enjoy quiet time in the family room with windows looking onto private, green space. A renovated powder room completes the first floor. The second floor has an oversize primary suite with a spacious sitting room/office featuring a gas fireplace, 2 walk-in closets, and ensuite renovated bath with dual sink vanity, whirlpool tub, and large shower. The 2nd bedroom also has its own ensuite bath and walk-in closet. The full basement includes a large finished room with space for a home theater, pool table, ping pong, workout space (you're only limited by your imagination) and plenty of storage. Savvy buyers will appreciate this unit's location within the development, affording it both tremendous natural light and views of private green space. Moore Estate itself is remarkable for it's large amount of open space, lovely clubhouse with gym and pool, tennis courts, and central location. Specifically it is approx 2 miles to the vibrant downtowns of Morristown and Madison, less than a mile to Convent Station with midtown direct train service to NY Penn, and a stone's throw to the idyllic walking trails of Loantaka Reservation.

## 23 Pippins Way\*

Morris Twp.\* (2324)

\$829,000

**MLS#:** 3899410  
**# Rooms:** 8  
**# Bedrooms:** 2  
**# FullBaths:** 2  
**# HalfBaths:** 1  
**Lot Size:** 0.045 AC\*  
**Acres:** 0.04\*  
**Tax Year:** 2023  
**Taxes:** \$14,558  
**Year Built:** 1993

**Style:** Multi Floor Unit, Townhouse-Interior

**Garage:** 1 / Attached Garage, Garage Door Opener, Inside Entrance

**Basement:** Yes / Finished

**Heat:** 1 Unit, Forced Hot Air

**Cool:** 1 Unit, Central Air

**Fireplace:** 2 / Gas Fireplace, Living Room, See Remarks

**Directions:** Woodland to Steeple Chase Way, Right on Pippins Way. OR Madison Ave to Canfield Rd to Pippins Way.



EQUAL HOUSING  
OPPORTUNITY